

# When that tree went

words by Matt Harvey  
music by David Haines 27th July 2021  
commissioned by South Devon Singers

Andante [crotchet = 90]  
Soprano VERSE 1

2 *p*  
When that tree went a part of me that cried and climbed went

Alto  
2 *p*  
When that tree went a part of me that cried and climbed went

Baritone  
2 *p*  
1-2 3 When that tree went a part of me that cried and climbed went

Soprano  
with that tree That tried and climbed and climbed and fell Why did it go? It's

Alto  
with that tree That tried and climbed and climbed and fell Why did it go? It's

Baritone  
6 with that tree That tried and climbed and climbed and fell Why did it go? It's

Soprano *mf* VERSE 2  
hard to tell And in its place came o - range cranes

Alto *mf*  
hard to tell And in its place came o - range cranes

Baritone *mf*  
10 hard to tell And in its place came o - range cranes

Soprano

*mp*

Slow - - - mo - ving swan - - - like climb - ing - - frames

Alto

*mp*

Slow - - - mo - ving swan - - - like climb - ing - frames

Baritone

*mp*

14 Slow - - - mo - ving swan - - - like climb - ing - - frames

Soprano

*p*

Head - less brutes with lat - tice necks claws that scrape and beaks that peck

Alto

*p*

Head - less brutes with lat - tice necks claws that scrape and beaks that peck

Baritone

*p*

18 Head - less brutes with lat - tice necks claws that scrape and beaks that peck

Soprano

*pp* **VERSE 3**

I - ron beasts have me - tal needs They're nei - ther sad nor

Alto

*pp*

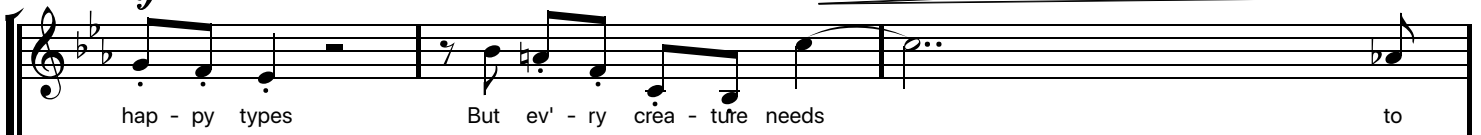
I - ron beasts have me - tal needs They're nei - ther sad nor

Baritone

*pp*

22 I - ron beasts have me - tal needs They're nei - ther sad nor

Soprano

*mf*

Alto

*mf*

Baritone

*mf*

Soprano

*f*

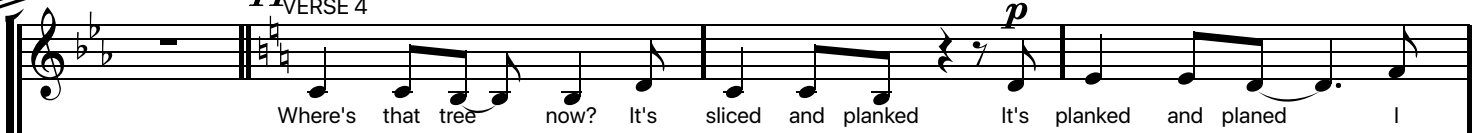
Alto

*f*

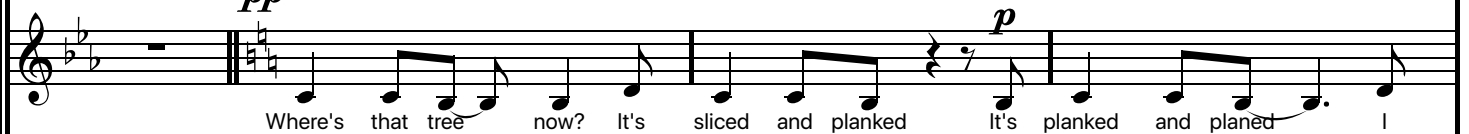
Baritone

*f*

Soprano

*pp* VERSE 4

Alto

*pp*

Baritone

*pp*

Soprano

nev - er thanked That ge - ner - ous tree from days long past When I was small

*mf* *f*

Alto

nev - er thanked That ge - ner - ous tree from days long past When I was small

*mf* *f*

Baritone

nev - er thanked That ge - ner - ous tree from days long past When I was small

*mf* *f*

Soprano

and it was vast

*pp*

Alto

When I was small and it was vast

*pp*

Baritone

When I was small and it was vast

*pp*

Soprano

The fu - ture feeds up - on the past That's

*p* <sup>VERSE 5</sup>

Alto

The fu - ture feeds up - on the past That's

*p*

Baritone

The fu - ture feeds up - on the past That's

*p*

Soprano

*f*

why not all the good things last The past lives on in - side the mind Not

Alto

*f*

why not all the good things last The past lives on in - side the mind Not

Baritone

*f*

49 why not all the good things last The past lives on in - side the mind Not

Soprano

CODA [VERSE 1 REPRISÉ]

*p*

all good things are left be - hind When that

Alto

*p*

all good things are left be - hind are left be - hind When that tree went a

Baritone

*p*

53 all good things are left be - hind are left be - hind When that tree

Soprano

*mf*

tree went a part of me That

Alto

*mf*

part of me that cried and climbed went with that tree That

Baritone

*mf*

57 went a part of me that cried and climbed went with that tree

Soprano

tried and climbed and fell Why did it go? Why did it

*p*

tried and climbed and climbed and fell Why did it go? Why did it

*p*

60 and climbed and fell Why did it go? Why did it

*p*

Soprano

go? It's hard to tell

go? It's hard to tell

go? It's hard to tell hard to tell

64 go? It's hard to tell hard to tell

Soprano

hard to tell

hard to tell

68